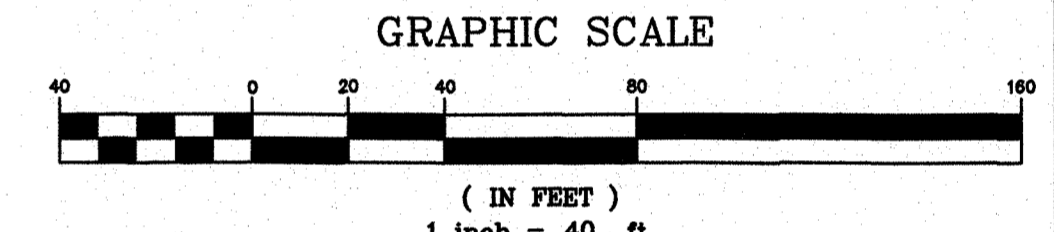
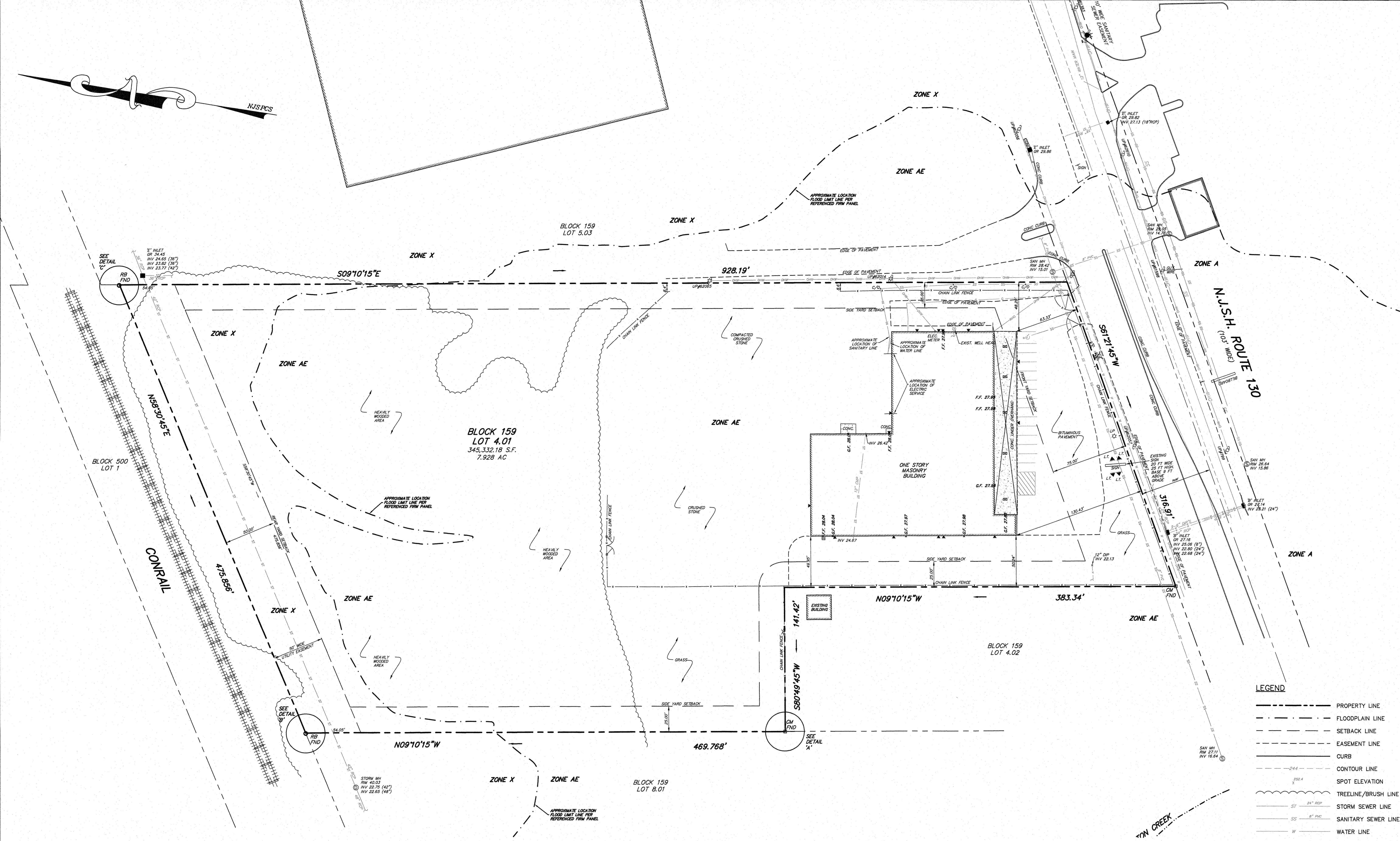


NOTES:

1. LOT AND BLOCK NUMBERS REFER TO TOWNSHIP OF FLORENCE TAX MAP, SHEET NUMBER 12.
2. THIS PLAN WAS PREPARED WITHOUT THE BENEFIT OF A TITLE REPORT. THE PARCEL IS SUBJECT TO ANY AND ALL EASEMENTS, RESTRICTIONS AND ENCUMBRANCES RECORDED AND NOT RECORDED.
3. PLAN/DEED REFERENCES:
 - A. "PLAN OF SURVEY - BLOCK 159 - LOT 4.01", PREPARED BY STOUT & CALDWELL ENGINEERS OF CINNAMINSON, NEW JERSEY, DATED JANUARY 7, 2009, REVISED JANUARY 6, 2015.
4. ALL BEARINGS SHOWN ON THIS PLAN HAVE BEEN ROTATED TO NEW JERSEY STATE PLANE COORDINATE SYSTEM. ANGLE OF ROTATION BETWEEN NEW JERSEY STATE PLANE COORDINATE SYSTEM AND ABOVE REFERENCED PLAN IS 00°00'00".
5. THE BOUNDARY SHOWN ON THIS PLAN CLOSES IN ACCORDANCE WITH THE TECHNICAL STANDARDS FOR PROPERTY BOUNDARY SURVEY ADOPTED BY THE BOARD OF DIRECTORS OF THE NEW JERSEY SOCIETY OF PROFESSIONAL LAND SURVEYORS. (1 IN 5000). ACTUAL CLOSURE 1:7,339,660.23
6. HORIZONTAL DATUM = NAD 83
7. EXISTING FEATURES SHOWN ON THIS PLAN WERE LOCATED BY STOUT & CALDWELL ENGINEERS, LLC FIELD CREW ON OR ABOUT JULY 17, 2021. ONLY CONDITIONS EXISTING AT THAT TIME ARE REFLECTED ON THIS PLAN.
8. SURFACE FEATURES SUCH AS INLETS, MANHOLES, WATER VALVES, GAS VALVES, ETC. WERE LOCATED BY FIELD SURVEY. THERE MAY BE OTHER UNDERGROUND STRUCTURES OR FACILITIES, THE EXISTENCE OF WHICH ARE NOT KNOWN TO THE UNDERSIGNED. SIZE AND LOCATION OF ALL UNDERGROUND UTILITIES AND STRUCTURES MUST BE VERIFIED BY THE APPROPRIATE AUTHORITIES.
9. AREAS OBSCURED BY DENSE VEGETATION MAY NOT CONFORM TO NATIONAL MAP ACCURACY STANDARDS.
10. THE SUBJECT PROPERTY IS LOCATED IN AN AREA DETERMINED TO BE IN THE FOLLOWING FLOOD ZONES:
 - ZONE AE: SPECIAL FLOOD HAZARD AREAS WITH A BASE FLOOD ELEVATION DETERMINED.
 AS INDICATED ON THE FLOOD INSURANCE RATE MAP, BURLINGTON COUNTY, NEW JERSEY (ALL JURISDICTIONS), PANEL 131 OF 841, COMMUNITY PANEL NUMBER: 340298 0131 F, MAP NUMBER 3405030131F, EFFECTIVE DATE: DECEMBER 21, 2017.



Rev. No.	Date	Description	By
2	07/29/21	REVISED FLOOD LIMIT LOER PER UPDATED FIRM	KWC
1	07/22/21	INITIAL SUBMISSION	KWC

GENNADI ALEKSANDROSKI
530 GREAVES AVENUE
STATEN ISLAND, NY 10308

Robert R. Stout
ROBERT R. STOUT
PROFESSIONAL ENGINEER
PROFESSIONAL LAND SURVEYOR
N.J. LICENSE No. 38421

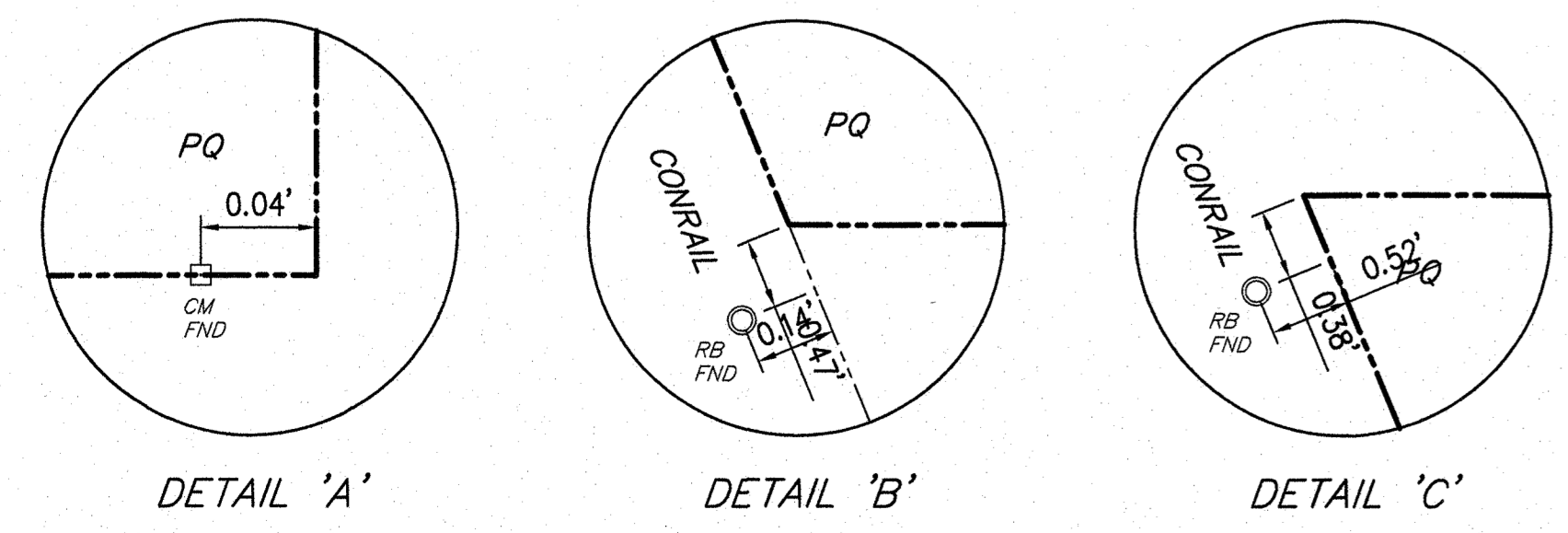
ALL INFORMATION PROVIDED ON THIS DOCUMENT IS THE PROPERTY OF THE PROFESSIONAL ENGINEER AND SURVEYOR. IT IS NOT TO BE COPIED, REPRODUCED OR OTHERWISE DISTRIBUTED AND UTILIZED WITHOUT THE WRITTEN PERMISSION OF BOTH PARTIES. ONLY DOCUMENTS THAT ARE SIGNED AND SEALED BY A LICENSED PROFESSIONAL ENGINEER, SURVEYOR AND/OR AN AUTHENTICATED DOCUMENT ISSUED BY STOUT AND CALDWELL ENGINEERS, LLC, STOUT AND CALDWELL ENGINEERS, LLC SHALL NOT BE HELD RESPONSIBLE FOR ANY ALTERATIONS AND/OR MODIFICATIONS MADE BY OTHERS TO SUCH DOCUMENTS.

Stout & Caldwell Engineers, LLC
705 U.S. Route 130 South - P.O. Box 2290
Cinnaminson, NJ 08077
OFFICE 856.786.2202 FAX 856.786.3050
www.stoutcaldwell.com
Stout & Caldwell Engineers, LLC, NJ Cert. Of Authorization No. 246A28092700

PLAN OF SURVEY
BLOCK 159 - LOT 4.01
TAX MAP SHEET #12
LAND SITUATE IN
FLORENCE TOWNSHIP
BURLINGTON COUNTY, NEW JERSEY

Scale: 1"=40'
Job Number: 0803-030H
Drawn by: KWC
Checked by: RRS
Drawing No.: SU-1
Sheet No.: 1 OF 1

- LEGEND**
- PROPERTY LINE
 - - - FLOODPLAIN LINE
 - - - SETBACK LINE
 - - - EASEMENT LINE
 - CURB
 - - - CONTOUR LINE
 - SPOT ELEVATION
 - TREELINE/BRUSH LINE
 - STORM SEWER LINE
 - SANITARY SEWER LINE
 - WATER LINE
 - GAS LINE
 - x CHAIN LINK FENCE LINE
 - WOOD FENCE LINE
 - OVERHEAD WIRES
 - ⊙ STORM SEWER MANHOLE
 - ⊙ SANITARY SEWER MANHOLE
 - ⊙ ELECTRIC MANHOLE
 - ⊙ WATER MANHOLE
 - ⊙ MANHOLE
 - ⊙ 'B' INLET
 - ⊙ 'A' INLET
 - ⊙ HEADWALL
 - ⊙ CLEANOUT
 - ⊙ GAS VALVE
 - ⊙ WATER VALVE
 - ⊙ FIRE HYDRANT
 - ⊙ UTILITY POLE
 - ⊙ UTILITY POLE W/LIGHT
 - ⊙ SIGN
 - ⊙ TREE W/DIAMETER
 - ⊙ PK NAIL FOUND
 - ⊙ CONCRETE MONUMENT FOUND
 - ⊙ DRILL HOLE FOUND
 - F.F. FINISH FLOOR ELEVATION (MAN DOOR)
 - G.F. FINISH FLOOR ELEVATION (GARAGE DOOR)



S:\Projects\2008 Projects\0803-030H - Aleksandroski Property\CAD\Survey\0803-030H Ebase.dwg Layout1, © 2021 Stout & Caldwell Engineer, LLC