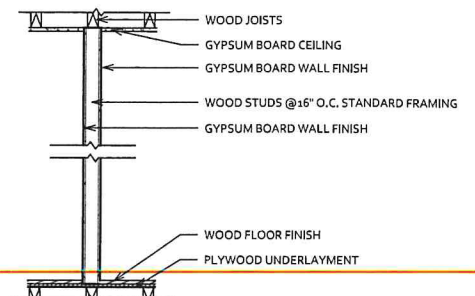


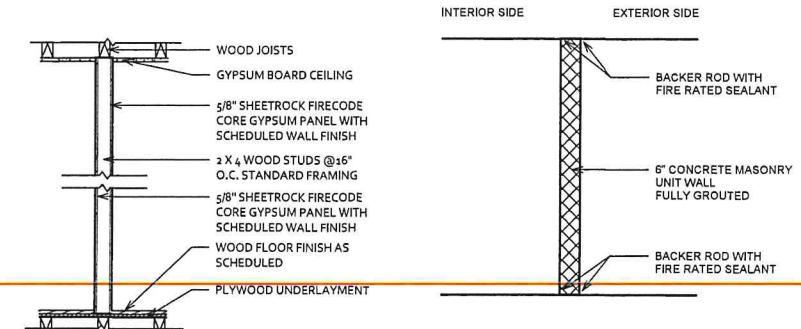
RECEIVED
MAY 23 2022

ZB#0021-16C



INTERIOR WALL TYPE I-1
FRAMED STUD WALL W/ GYPSUM
BOARD FINISH

Wall Type I-1 - Gyp Wall
1/2" = 1'-0"



INTERIOR WALL TYPE I-3
FRAMED STUD WALL W/ GYPSUM BOARD FINISH

Wall Type I-3 - Gyp Wall wood studs 1HR
1/2" = 1'-0"

WALL TYPE I-2 - INTERIOR MASONRY WALL
1/2" = 1'-0"



J Design and Consultants LLC
6101 Washington Lane Suite 220
Wynona, PA 19095
Tel. (215) 999-4011

No.	Description	Date
4	Revision 4	05/12/2022

THE ARCHITECT SHALL NOT HAVE CONTROL OR CHARGE OF, AND SHALL NOT BE RESPONSIBLE FOR CONSTRUCTION MEANS, METHODS, DEVIATIONS, TECHNIQUES, OR PROCEDURES, OR FOR SAFETY PRECAUTIONS AND PROGRAMS IN CONNECTION WITH THE WORK, OR FOR THE ACTS OR OMISSIONS OF THE CONTRACTOR, SUBCONTRACTORS OR ANY OTHER PERSON PERFORMING ANY OF THE WORK, OR FOR FAILURE OF ANY OF THEM TO CARRY OUT THE WORK IN ACCORDANCE WITH THE DESIGN DOCUMENTS. ALWAYS USE DIMENSIONS AS SHOWN AND DRAWINGS ARE NOT TO BE SCALED.

STAMP AND SEAL

ASA INVESTMENTS & MAN.

18-20 FRONT ST
FLORENCE NJ

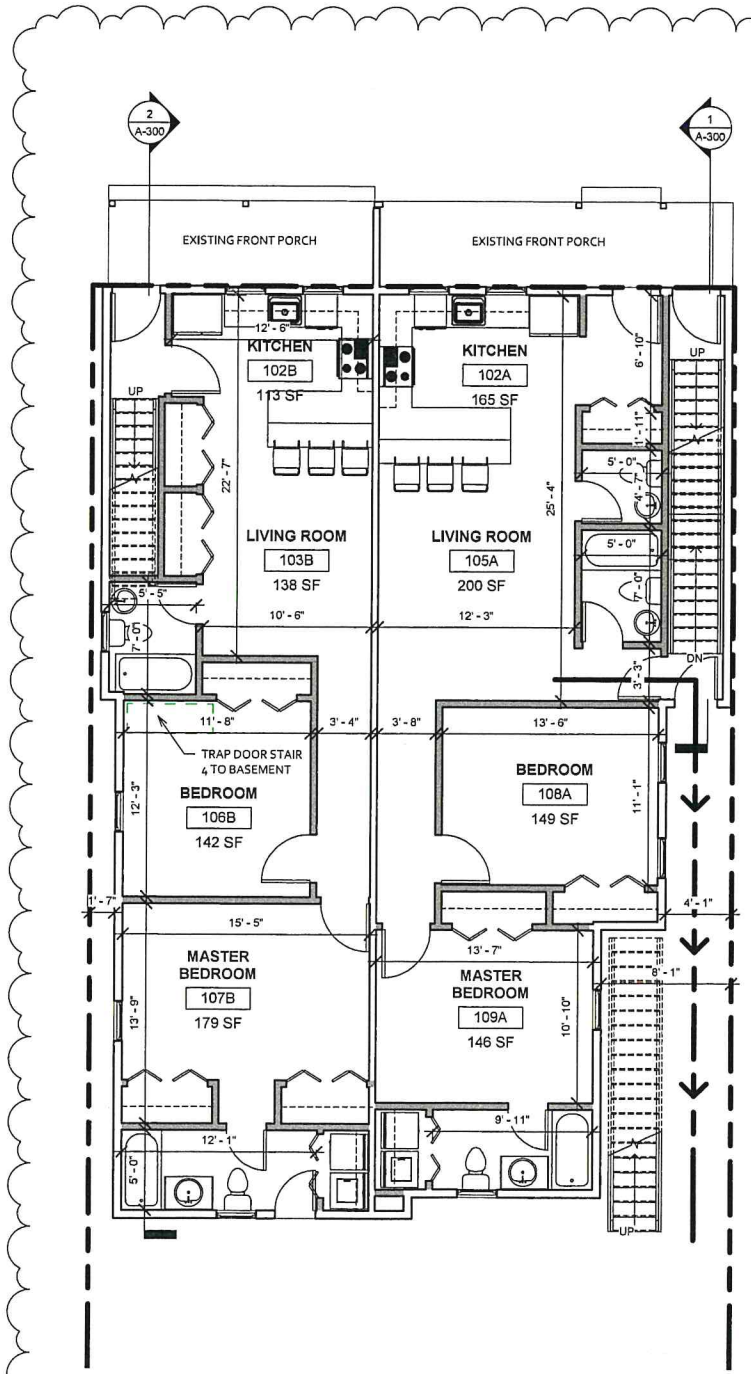
FLOOR PLANS

Project number 1820F
Date 03/03/2022
Drawn by LR
Checked by MC

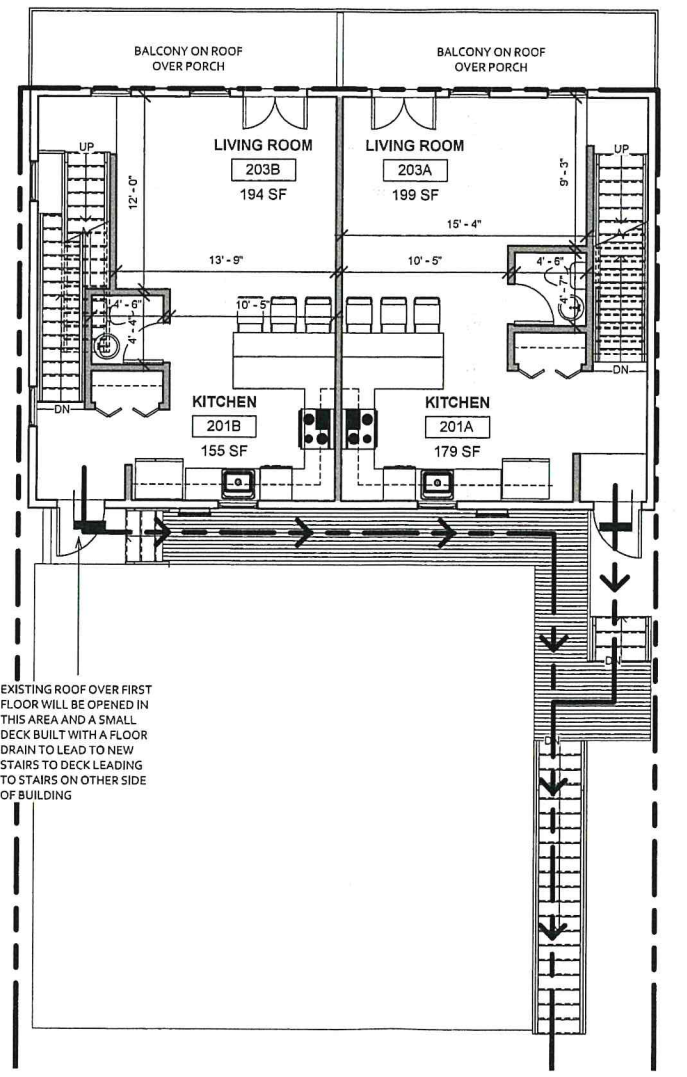
A-100
Scale As indicated

COPYRIGHT 2022 J DESIGN + CONSULTANTS LLC

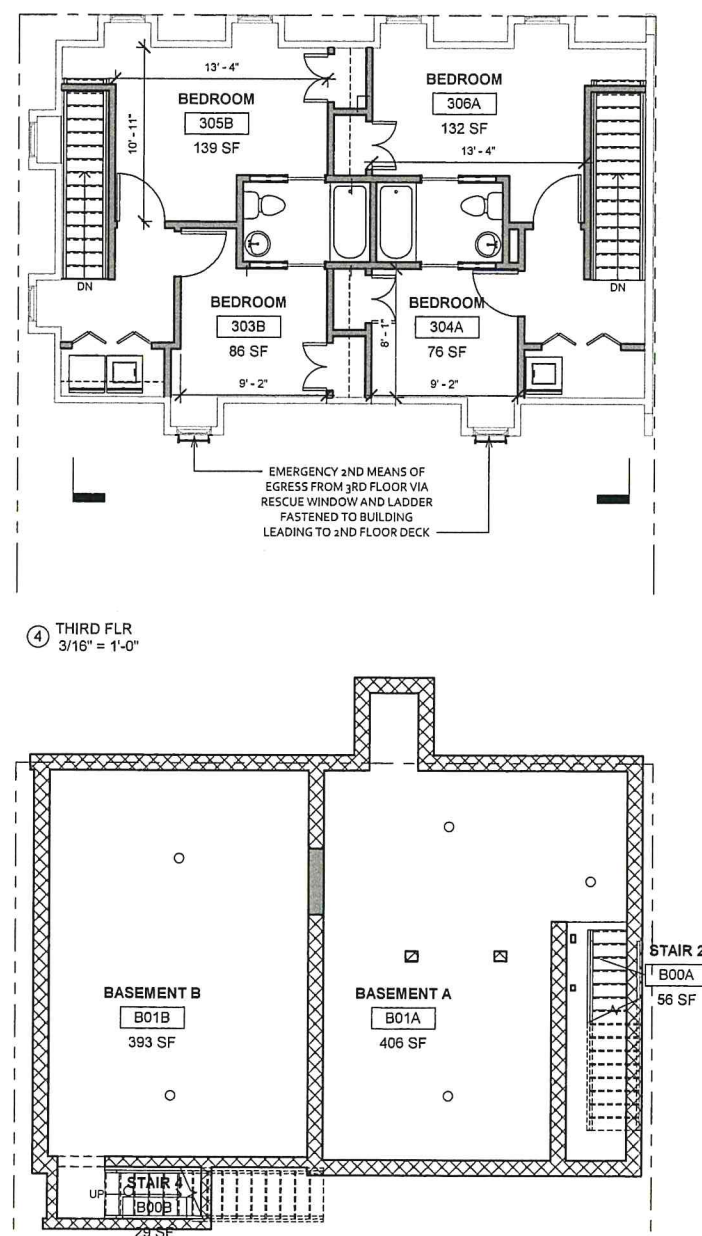
5/12/2022 3:37:52 PM



FIRST FLR
3/16" = 1'-0"



SECOND FLR
3/16" = 1'-0"



BASEMENT
3/16" = 1'-0"

Scale As indicated